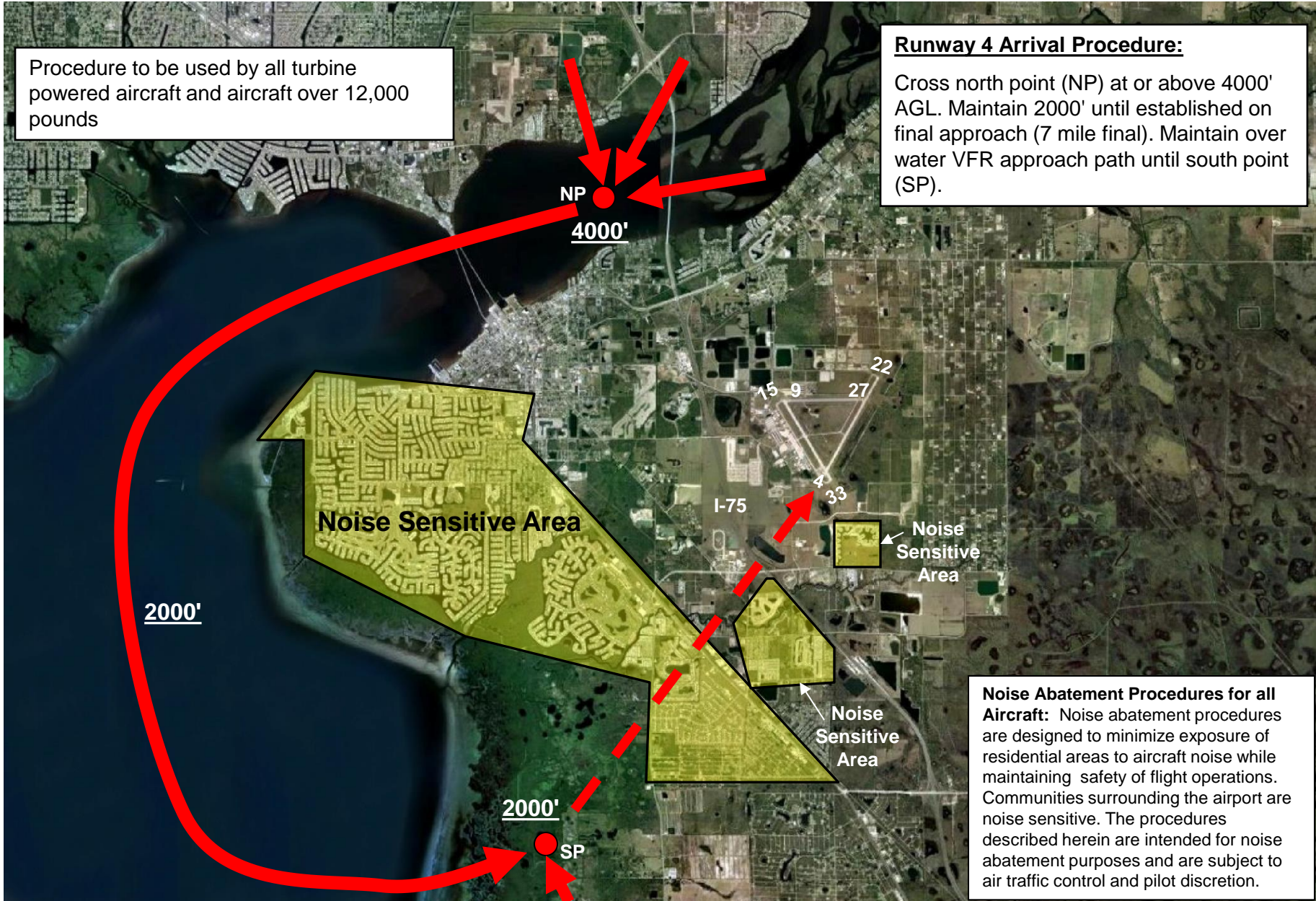


Procedure to be used by all turbine powered aircraft and aircraft over 12,000 pounds

**Runway 4 Arrival Procedure:**

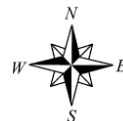
Cross north point (NP) at or above 4000' AGL. Maintain 2000' until established on final approach (7 mile final). Maintain over water VFR approach path until south point (SP).



**Noise Abatement Procedures for all Aircraft:** Noise abatement procedures are designed to minimize exposure of residential areas to aircraft noise while maintaining safety of flight operations. Communities surrounding the airport are noise sensitive. The procedures described herein are intended for noise abatement purposes and are subject to air traffic control and pilot discretion.

**Charlotte County Airport Noise Abatement Procedure**

**Runway 4 VFR Arrivals**



**Noise Abatement Procedures for all Aircraft:**  
Noise abatement procedures are designed to minimize exposure of residential areas to aircraft noise while maintaining safety of flight operations. Communities surrounding the airport are noise sensitive. The procedures described herein are intended for noise abatement purposes and are subject to air traffic control and pilot discretion.

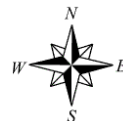
**Runway 4 Departure Procedure:**  
Depart straight-out until reaching 3000' AGL then initiate right turn.

**Runway 22 Departure Procedure:**  
When practical, make left turn to parallel Interstate 75 southeast bound until reaching 3000' AGL then proceed on course.



## Charlotte County Airport Noise Abatement Procedure

### Runway 4/22 VFR Departures



**Noise Abatement Procedures for all Aircraft:** Noise abatement procedures are designed to minimize exposure of residential areas to aircraft noise while maintaining safety of flight operations. Communities surrounding the airport are noise sensitive. The procedures described herein are intended for noise abatement purposes and are subject to air traffic control and pilot discretion.

**Runway 4 Departure Procedure:**

Depart straight-out until reaching 3000' AGL then initiate right turn.



**Runway 22 Departure Procedure:**

Depart straight-out and initiate right turn at shoreline.

**Runway 22 Departure Procedure (preferred):**

When practical, make left turn to parallel Interstate 75 southeast bound until reaching 3000' AGL then proceed on course.

**Charlotte County Airport Noise Abatement Procedure**

**Runway 4/22 VFR Departures (Alternative A)**



